

# SAGE

Schéma  
d'Aménagement  
et de Gestion  
des Eaux

## du bassin versant de l'Arc



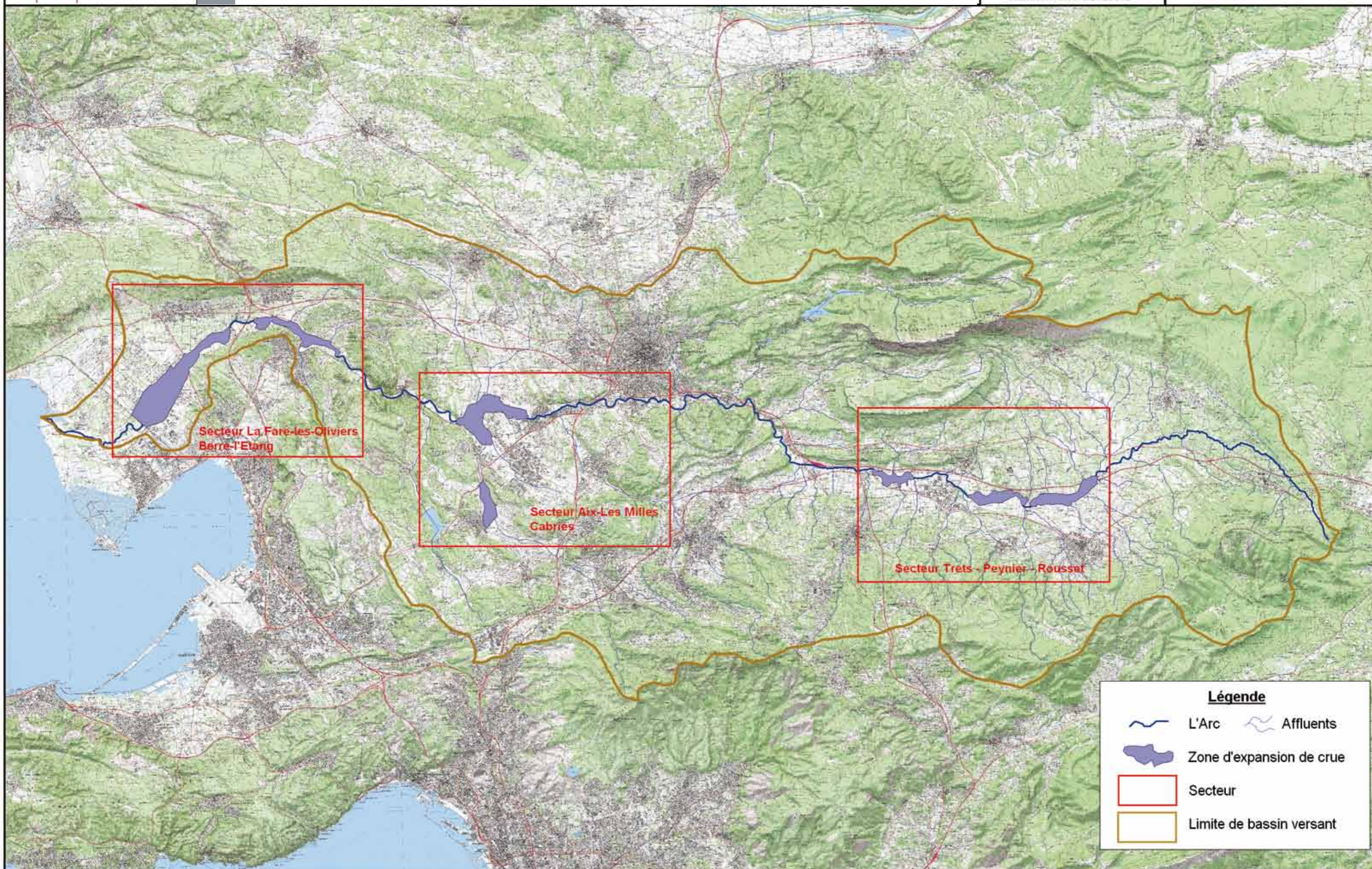
[ SAGE approuvé  
le 13 mars 2014 ]

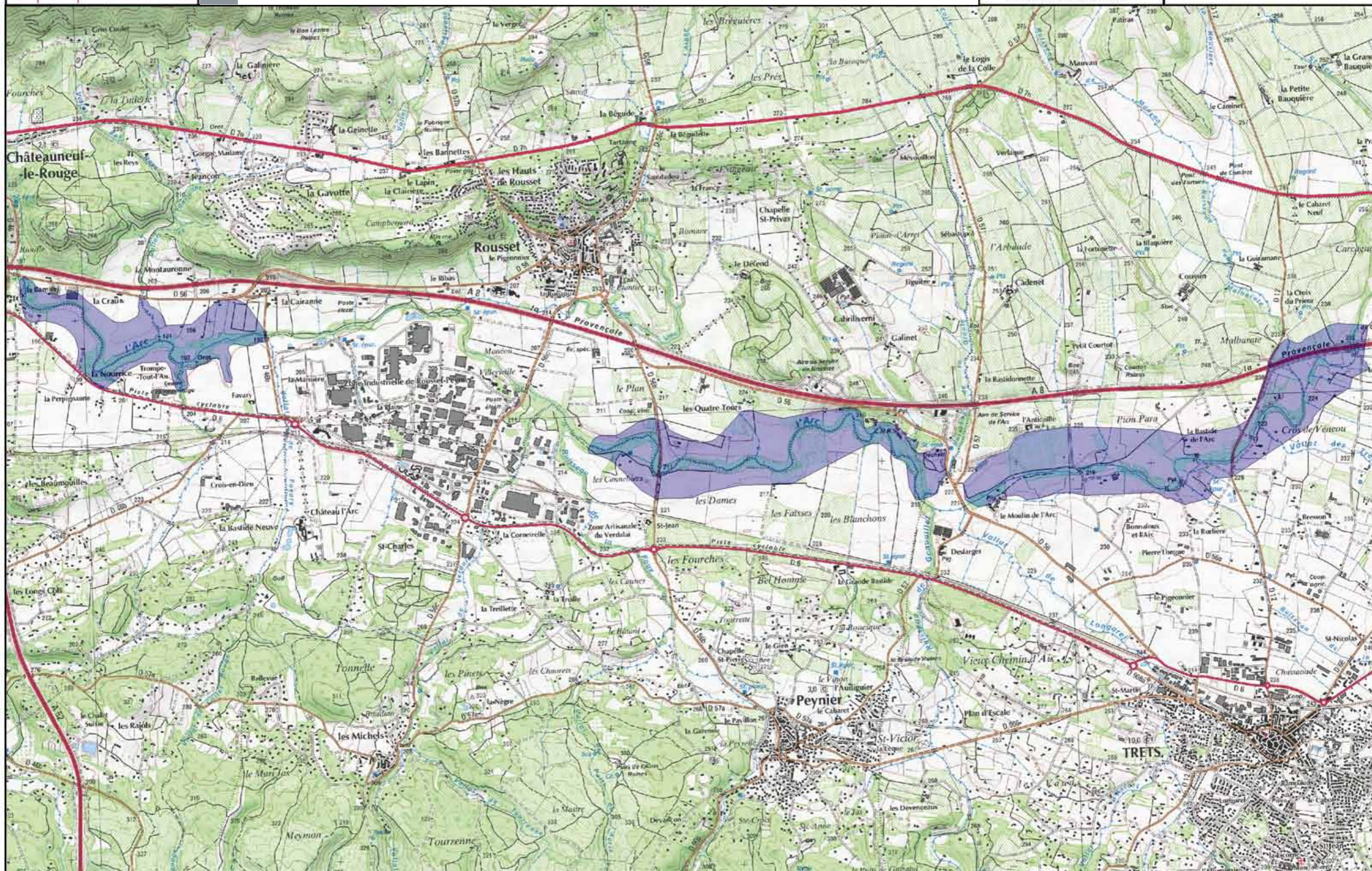
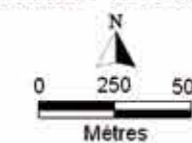
# Atlas cartographique du PAGD

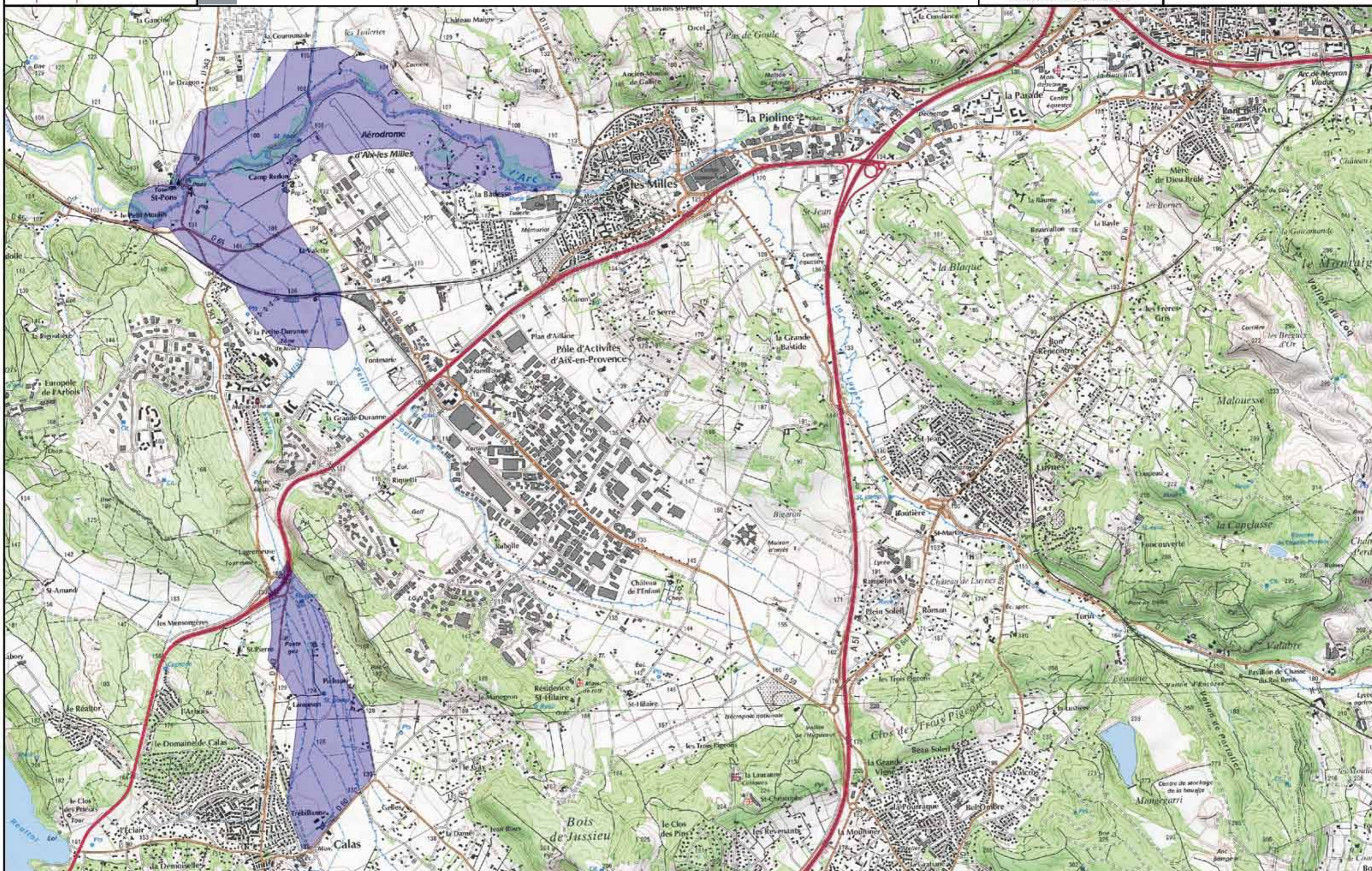
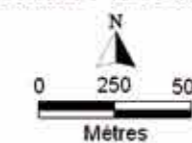
Plan d'Aménagement et de Gestion Durable du SAGE du bassin versant de l'Arc

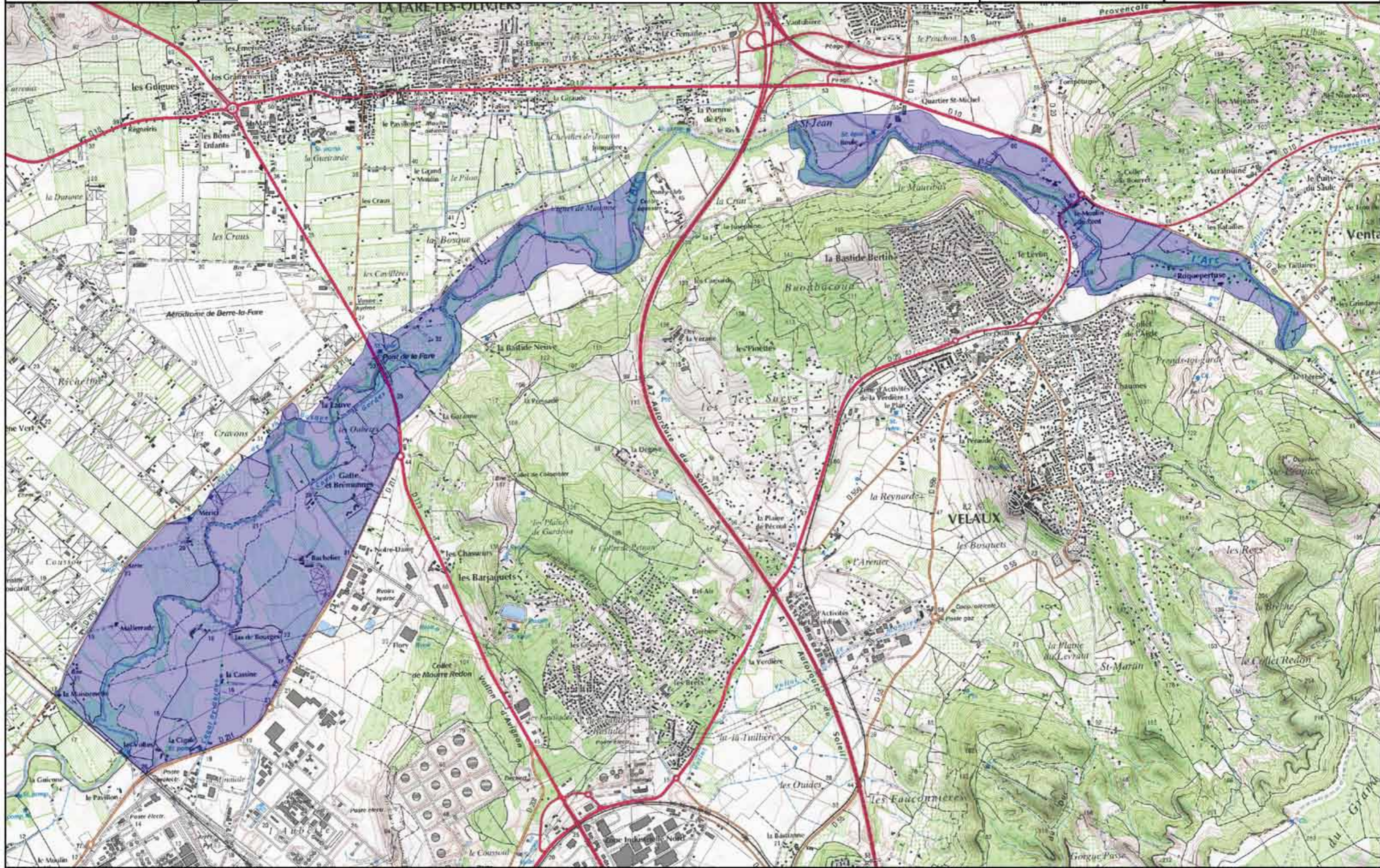
Janvier 2014

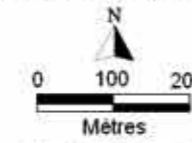








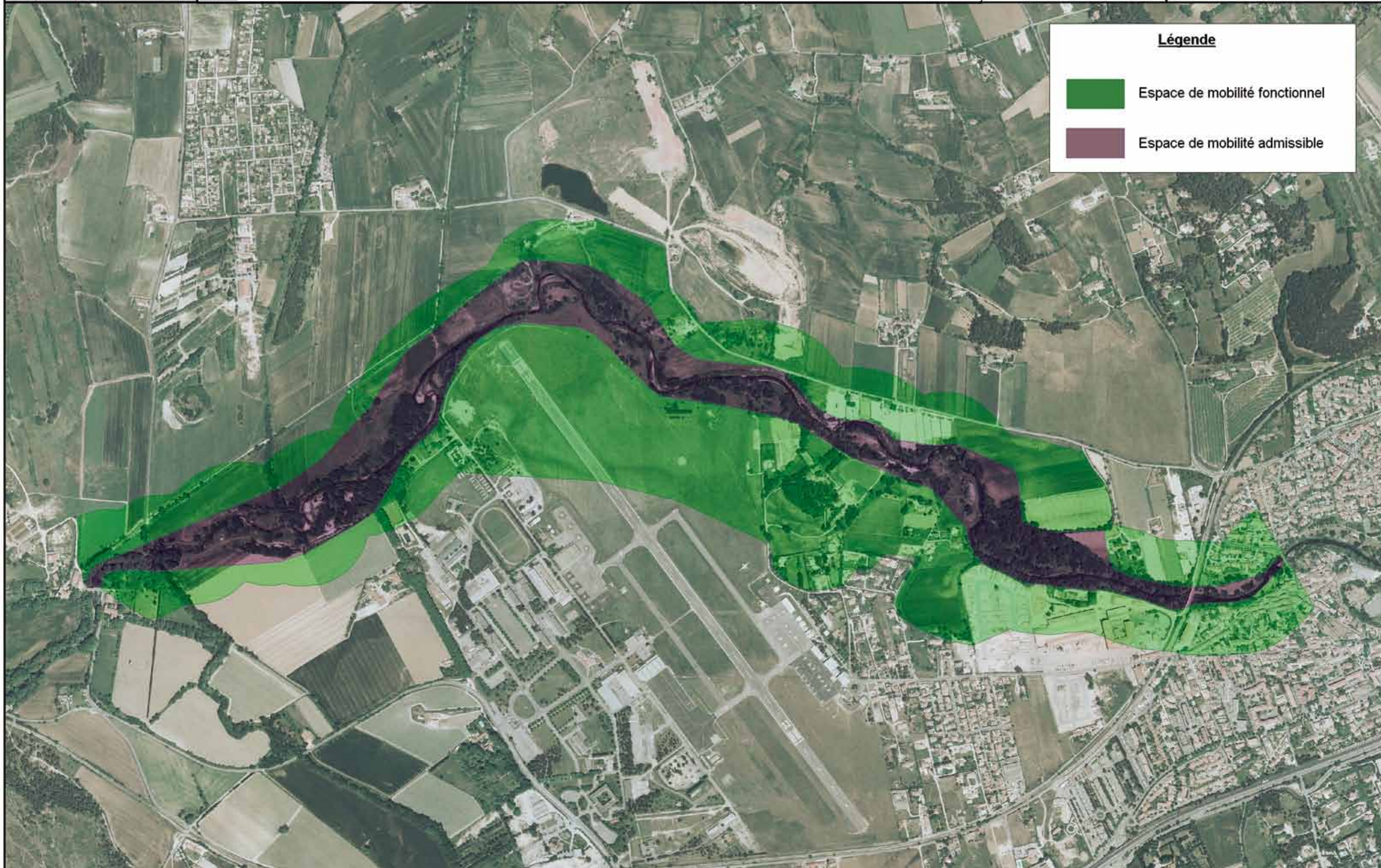


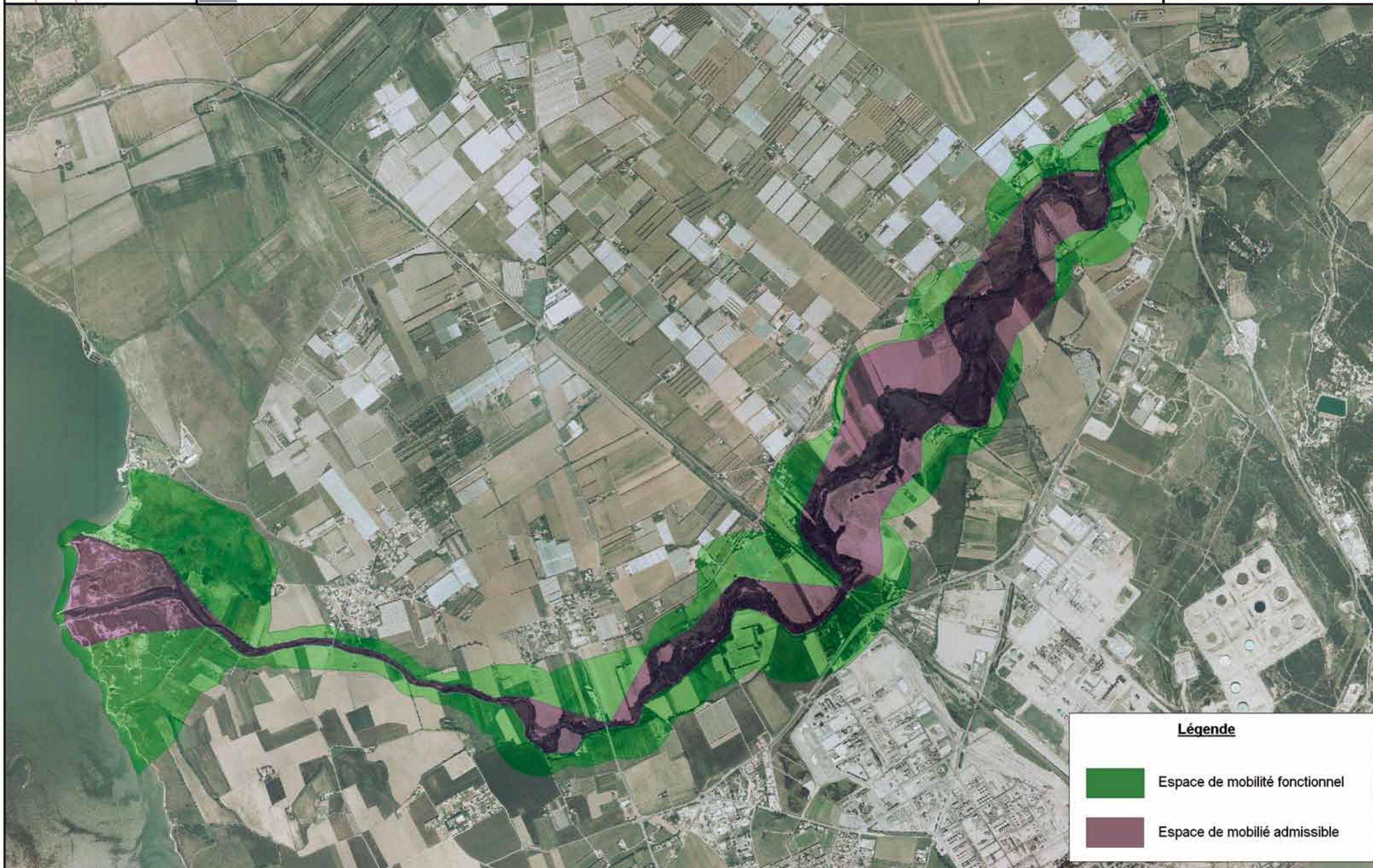
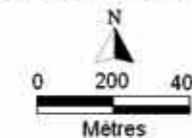





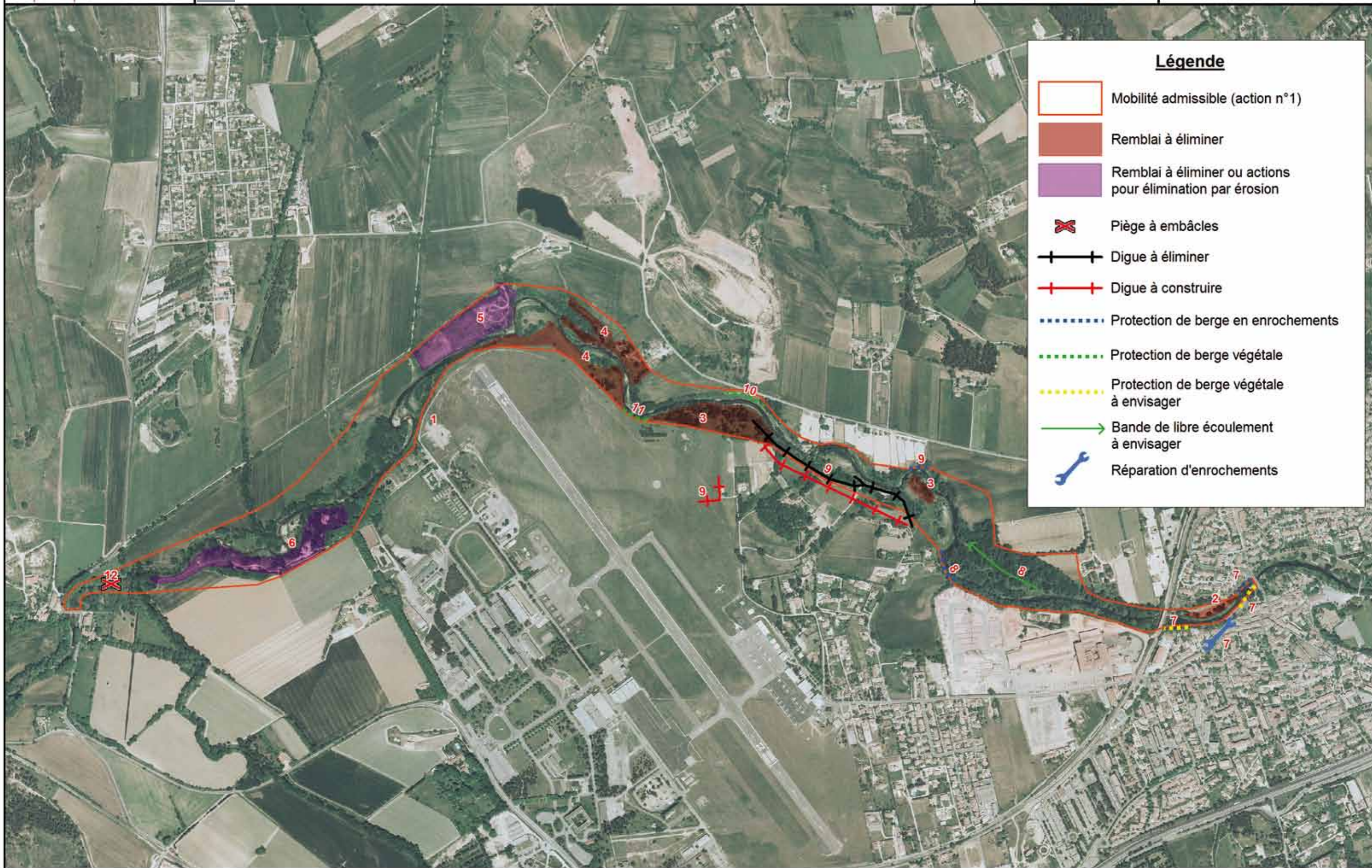
**Légende**

-  Espace de mobilité fonctionnel
-  Espace de mobilité admissible














**Légende**

-  Espace de mobilité fonctionnel
-  Espace de mobilité admissible



**Légende**

-  Mobilité admissible (action n°1)
-  Remblai à éliminer
-  Remblai à éliminer ou actions pour élimination par érosion
-  Piège à embâcles
-  Digue à éliminer
-  Digue à construire
-  Protection de berge en enrochements
-  Protection de berge végétale
-  Protection de berge végétale à envisager
-  Bande de libre écoulement à envisager
-  Réparation d'enrochements



Maîtrise d'ouvrage : SABA (Syndicat d'Aménagement du Bassin de l'Arc)



Assistance à maîtrise d'ouvrage : Cabinet Autrement Dit - Rachel VINDRY



Avec la participation de :



Région



Provence-Alpes-Côte d'Azur



CONSEIL  
GENERAL  
BOUCHES-DU-RHÔNE

